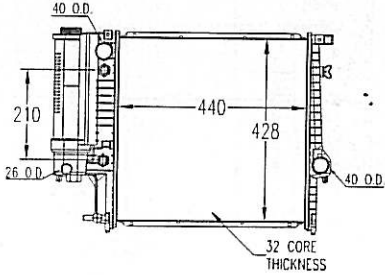
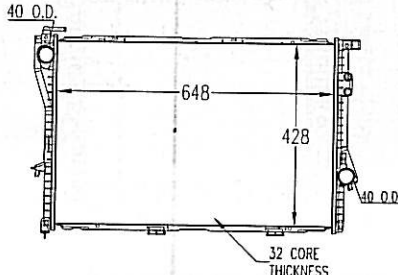
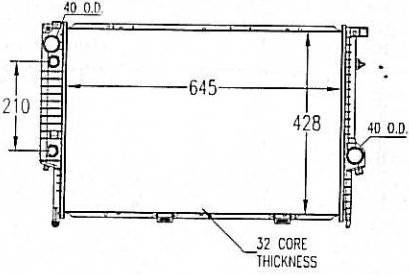
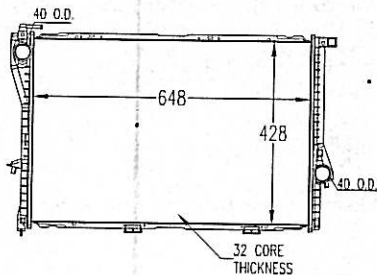
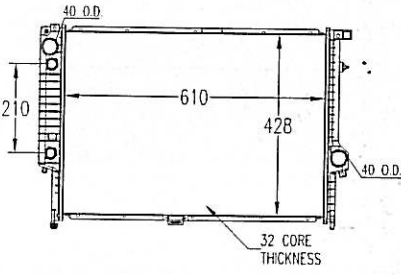
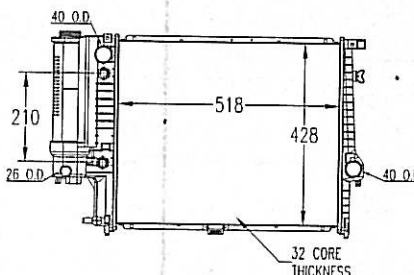
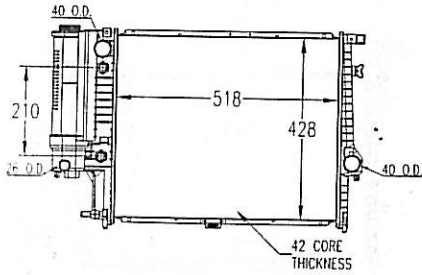


88-E 30/90- E 36/95- Z 3 LT0143	94- E 39 / E 38 (32mm) 94- E 39 / E 38 (42mm) LT0178
DPI:1295  <p>Core Size: 17-5/16×16-7/8×1-1/4</p> <p>Inlet Header: 18×2-3/8            Outlet Header: 18×2-3/8            Tran Oil Cooler: 8-1/4(Concentric)</p> <p>Inlet Conn: 1-9/16            Outlet Conn: 1-9/16            Eng Oil Cooler: NONE</p>	DPI:1401  <p>Core Size: 25-1/2×16-7/8×1-1/4</p> <p>Inlet Header: 18×2-3/8            Outlet Header: 18×2-3/8            Tran Oil Cooler: NONE</p> <p>Inlet Conn: 1-9/16            Outlet Conn: 1-9/16            Eng Oil Cooler: NONE</p>
OEM: 1719264 NISSENS: 60623A	OEM: 1702969 NISSENS: 60752A
92- E 34/90- E 32/92- E 31 LT0324	98-E 39/E38(32mm) 98-E 39/98- E 38/00- Z 8(42mm) LT0453
DPI:1842  <p>Core Size: 25-1/2×16-7/8×1-1/4</p> <p>Inlet Header: 18×2-3/8            Outlet Header: 18×2-3/8            Tran Oil Cooler: 8-1/4(Concentric)</p> <p>Inlet Conn: 1-9/16            Outlet Conn: 1-9/16            Eng Oil Cooler: NONE</p>	DPI:2284  <p>Core Size: 25-1/2×16-7/8×1-1/4</p> <p>Inlet Header: 18×2-3/8            Outlet Header: 18×2-3/8            Tran Oil Cooler: NONE</p> <p>Inlet Conn: 1-1/4            Outlet Conn: 1-1/4            Eng Oil Cooler: NONE</p>
OEM: 1702453	OEM: 1436060 NISSENS: 60648A
87- E 34/85- E 32(32mm) 87- E 34/85- E 32(42mm) LT0078	88- E34 LT0087
DPI:942  <p>Core Size: 24×16-7/8×1-1/4</p> <p>Inlet Header: 18×2-3/8            Outlet Header: 18×2-3/8            Tran Oil Cooler: 8-1/4(Concentric)</p> <p>Inlet Conn: 1-1/4            Outlet Conn: 1-1/4            Eng Oil Cooler: NONE</p>	DPI:979  <p>Core Size: 20-3/8×16-7/8×1-1/4</p> <p>Inlet Header: 18×2-3/8            Outlet Header: 18×2-3/8            Tran Oil Cooler: 8-1/4(Concentric)</p> <p>Inlet Conn: 1-1/4            Outlet Conn: 1-1/4            Eng Oil Cooler: NONE</p>
OEM: 1468080 NISSENS: 60597A	OEM: 1468469 NISSENS: 60709A

88- E34

LT0088

DPI:979



Core Size: 20-3/8×16-7/8×1-5/8

Inlet Header: 18×2-3/8  
 Outlet Header: 18×2-3/8  
 Tran Oil Cooler: 8-1/4 (Concentric)

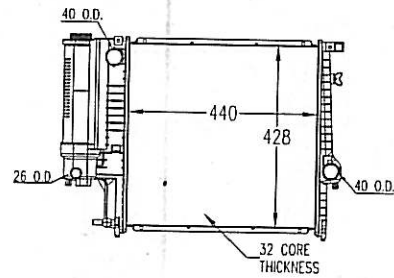
Inlet Conn: 1-1/4  
 Outlet Conn: 1-1/4  
 Eng Oil Cooler: NONE

OEM: 1168469  
 NISSENS: 60709A

88-E 30/90- E 36/95- Z 3

LT0144

DPI:1295 MT



Core Size: 17-5/16×16-7/8×1-1/4

Inlet Header: 18×2-3/8  
 Outlet Header: 18×2-3/8  
 Tran Oil Cooler: NONE

Inlet Conn: 1-9/16  
 Outlet Conn: 1-9/16  
 Eng Oil Cooler: NONE

OEM: 1728905